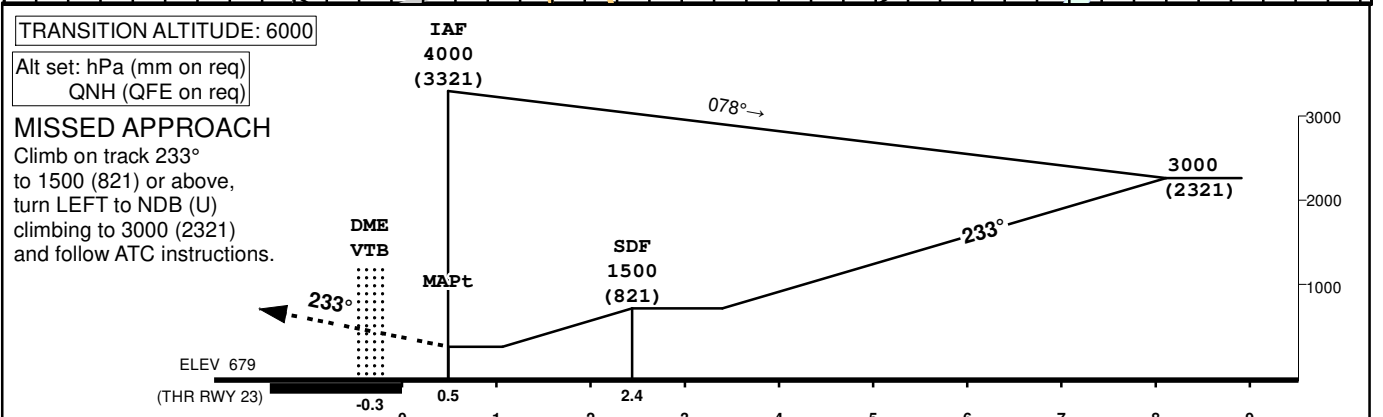
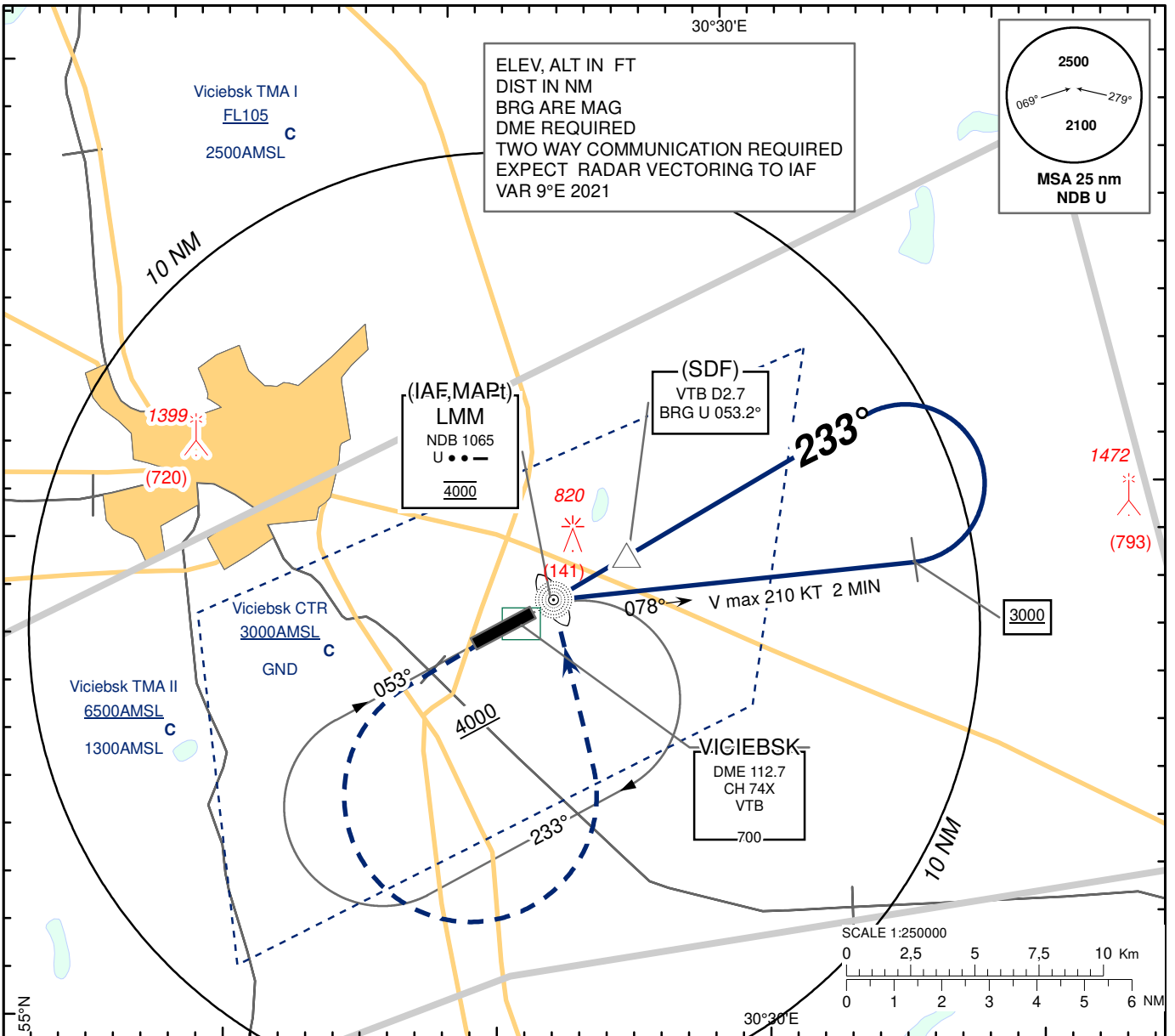


**INSTRUMENT  
APPROACH  
CHART - ICAO**

AERODROME ELEV 682  
HEIGHTS RELATED TO  
THR RWY 23 - ELEV 679

TWR 120.400  
MET 119.425 (EN)  
126.525(RUS)

**VICIEBSK  
NDB  
RWY 23**



TRANSITION ALTITUDE: 6000  
Alt set: hPa (mm on req)  
QNH (QFE on req)

**MISSED APPROACH**  
Climb on track 233°  
to 1500 (821) or above,  
turn LEFT to NDB (U)  
climbing to 3000 (2321)  
and follow ATC instructions.

Aircraft Category		A	B	C	D
Straight-in Approach OCA(H)	NDB U with SDF		1060 (380)		
	NDB U without SDF		1110 (430)		
Circle - to - land		1150 (470)	1180 (500)	1320 (630)	1470 (790)

CHANGE: Magnetic VAR.

VICIEBSK  
NDB  
RWY 23

**AERONAUTICAL DATA TABULATION**

<b>NDB approach to RWY23 from U NDB</b>	
<b>Fix/point</b>	<b>Coordinates</b>
(IAF, MAPt) U LMM	550807.9N 0302248.9E
(SDF) U BRG 053.2° D2.7 VTB	550859N 0302538E
VTB DME	550740.4N 0302135.8E
(TP) U BRG 078° V 210KT 2MIN	550833N 0303605E
THR RWY 23	550754.37N 0302203.81E